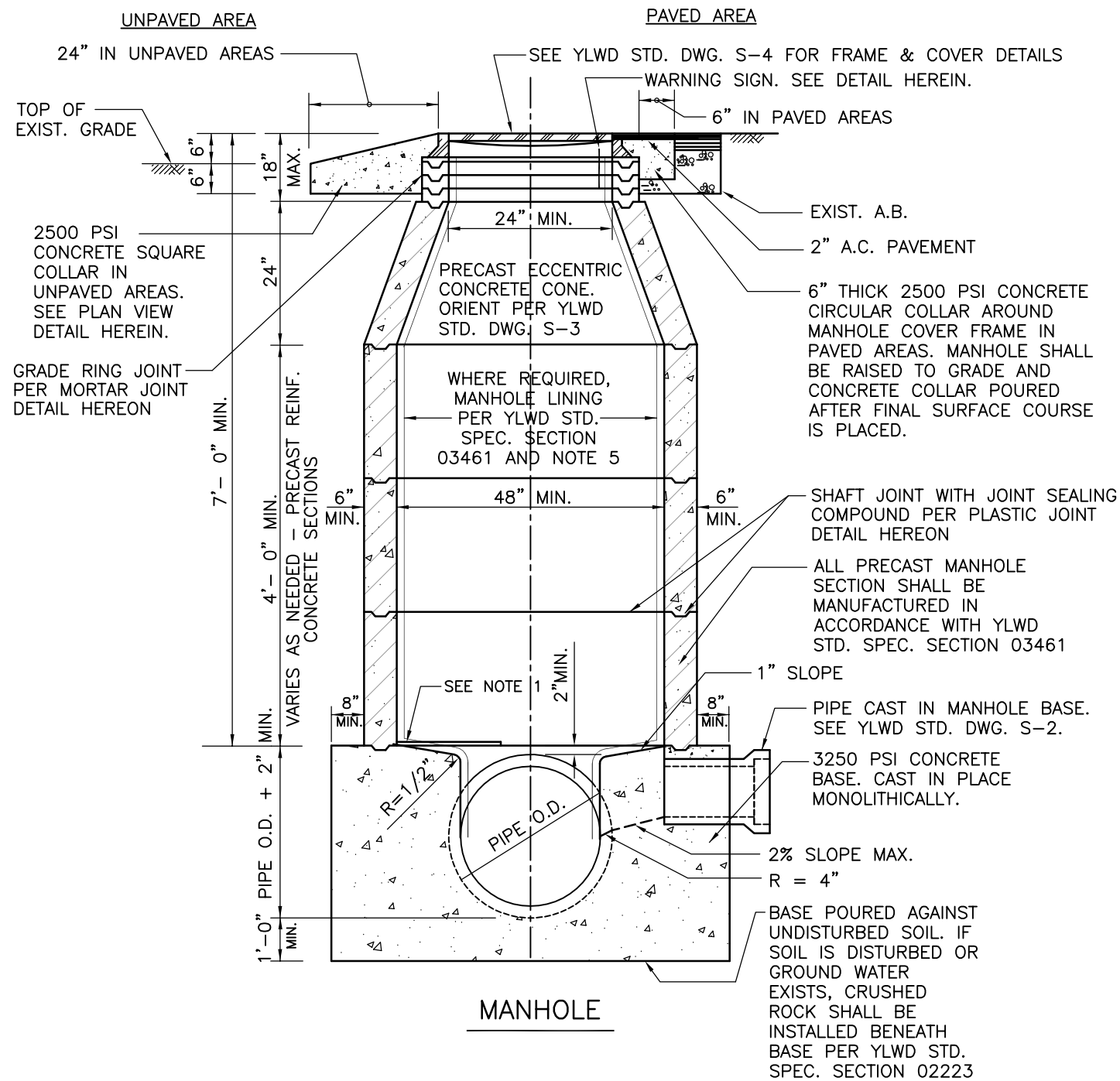


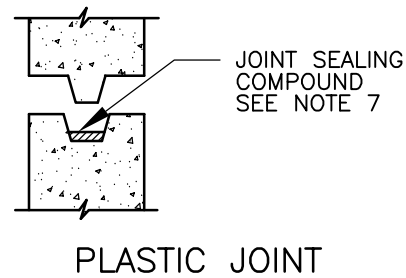
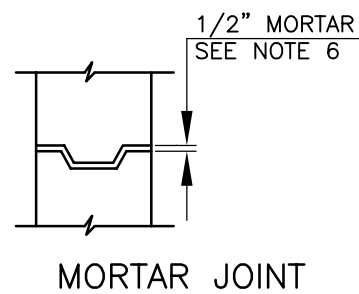
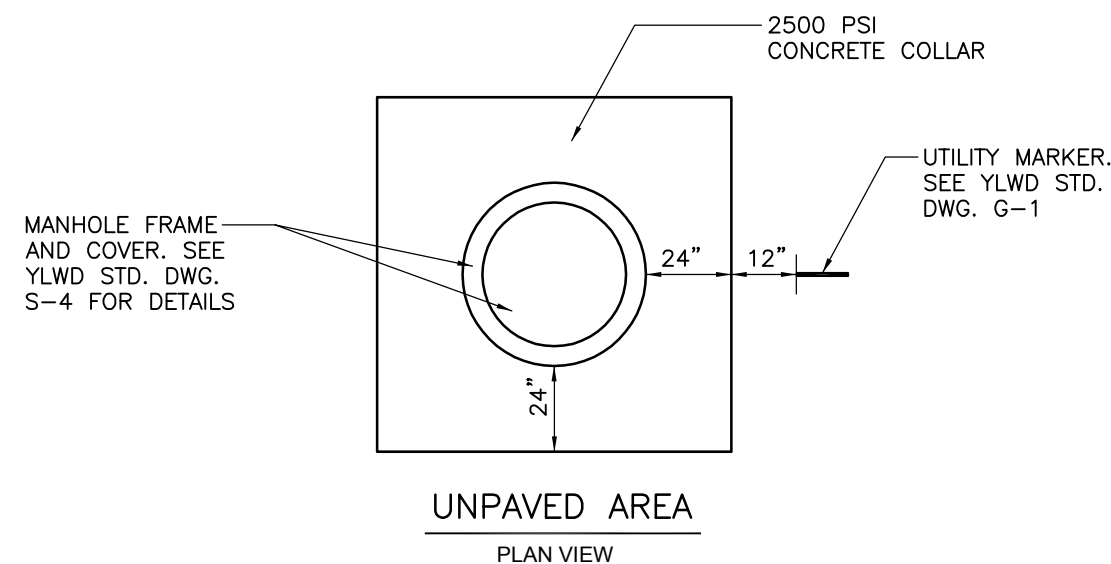
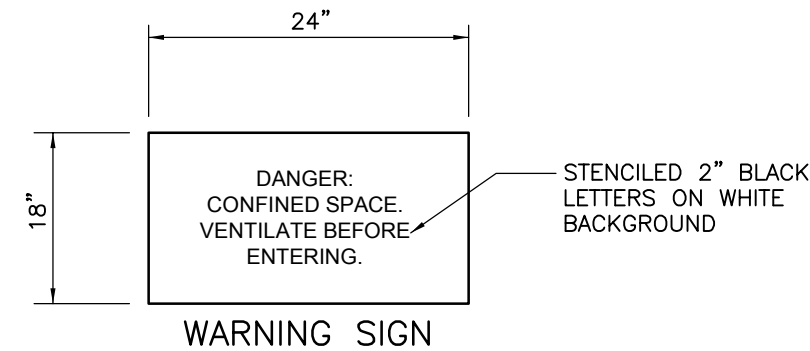
**SEWER STANDARD DRAWINGS  
TABLE OF CONTENTS**

<b><u>DRAWING NO.</u></b>	<b><u>DESCRIPTION</u></b>	<b><u>DATE</u></b>
S-1	MANHOLE DETAIL	7/2016
S-2	CONCRETE BASE DETAIL	7/2016
S-3	MANHOLE SHAFT LOCATION DETAILS	7/2016
S-4	TRAFFIC MANHOLE FRAME AND COVER	3/2019
S-5	DROP MANHOLE DETAIL	3/2019
S-6	SEWER LATERAL	10/2024
S-7	SEWER SADDLE AND CUT IN WYE CONNECTION	7/2016
S-8	SEWER BEDDING DETAILS	4/2026
S-9	NOT USED	
S-10	CONCRETE ENCASEMENT TYPE A, B AND C	7/2016
S-11	CONCRETE SLOPE ANCHORS	7/2016
S-12	STEEL CASING FOR SEWER PIPE	3/2019
S-13	YLWD STANDARD SEWER NOTES	4/2026
S-14	NOT USED	
S-15	CUL-DE-SAC MANHOLE BASE	4/2026
S-16	CLEANOUT FRAME AND COVER DETAIL	3/2019



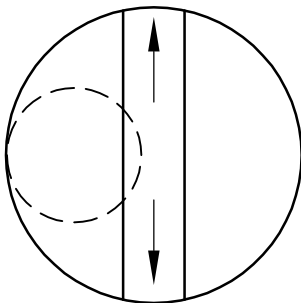
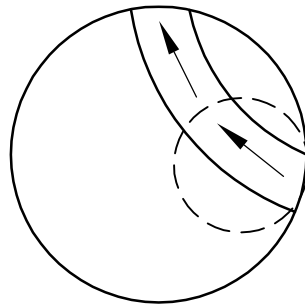
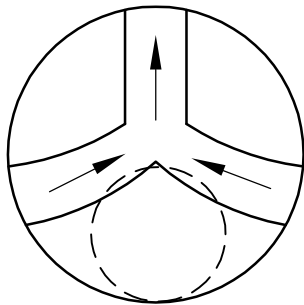
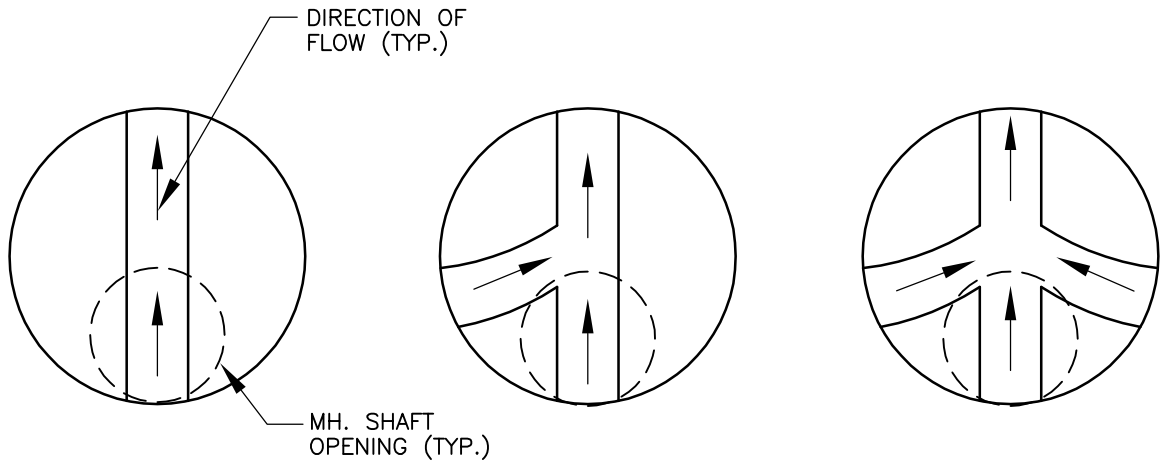
**NOTES:**

1. PLACE TWO HALF MOON SHAPED PLYWOOD COVERS (5/8" MIN. THICKNESS) ON BOTTOM OF MANHOLE AFTER SHAFTS HAVE BEEN SET TO KEEP DEBRIS FROM ENTERING SEWER. REMOVE PLYWOOD PRIOR TO FINAL ACCEPTANCE.
2. FOR DROP MANHOLE SEE YLWD STD. DWG. S-5.
3. FOR MANHOLES LOCATED IN UNPAVED AREAS, FRAME AND COVER SHOULD BE SET A MINIMUM OF 6" ABOVE FINISHED GRADE WITH A GRADUAL SQUARE CONCRETE COLLAR.
4. ALL INLETS AND OUTLETS SHALL BE SUPPORTED WITH CONCRETE SUPPORTS PRIOR TO POURING MANHOLE BASE.
5. SEQUENCE FOR COATING: 1) COAT INTERIOR WALLS OF MANHOLE BEFORE PLACING RINGS. 2) PLACE RINGS AND COAT RINGS AND WALLS AGAIN 4" PAST JOINT.
6. MORTAR JOINTS - SUFFICIENT MORTAR SHALL BE APPLIED ACROSS ENTIRE FACE OF JOINT SO THAT WHEN PRECAST UNITS ARE PLACED ON TOP OF ONE ANOTHER, THE MORTAR WILL SQUEEZE OUT BOTH THE INSIDE AND OUTSIDE WALL FACES.
7. PLASTIC JOINTS - PREFORMED, COLD-APPLIED, READY-TO-USE, PLASTIC JOINT SEALING COMPOUND SHALL BE CONSEAL BY CONCRETE SEALANTS, QUICK-SEAL BY QUIKSET UTILITY VAULTS, OR APPROVED EQUAL.

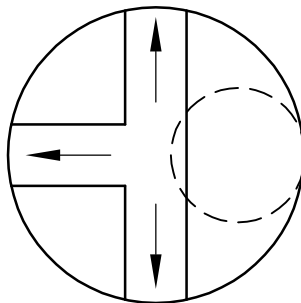


APPROVED BY ENGINEERING MANAGER		YORBA LINDA WATER DISTRICT	STD. DWG.
DATE 7/2016		MANHOLE DETAIL	S-1
			SHEET 1 OF 1

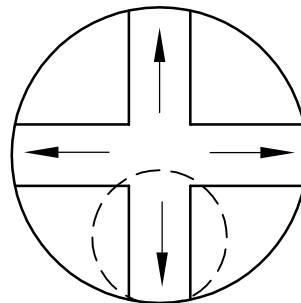




SUMMIT MH. (ONLY)  
EITHER SIDE



SUMMIT MH. (ONLY)



SUMMIT MH. (ONLY)  
ANY POSITION

APPROVED BY  
ENGINEERING  
MANAGER

DATE  
7/2016



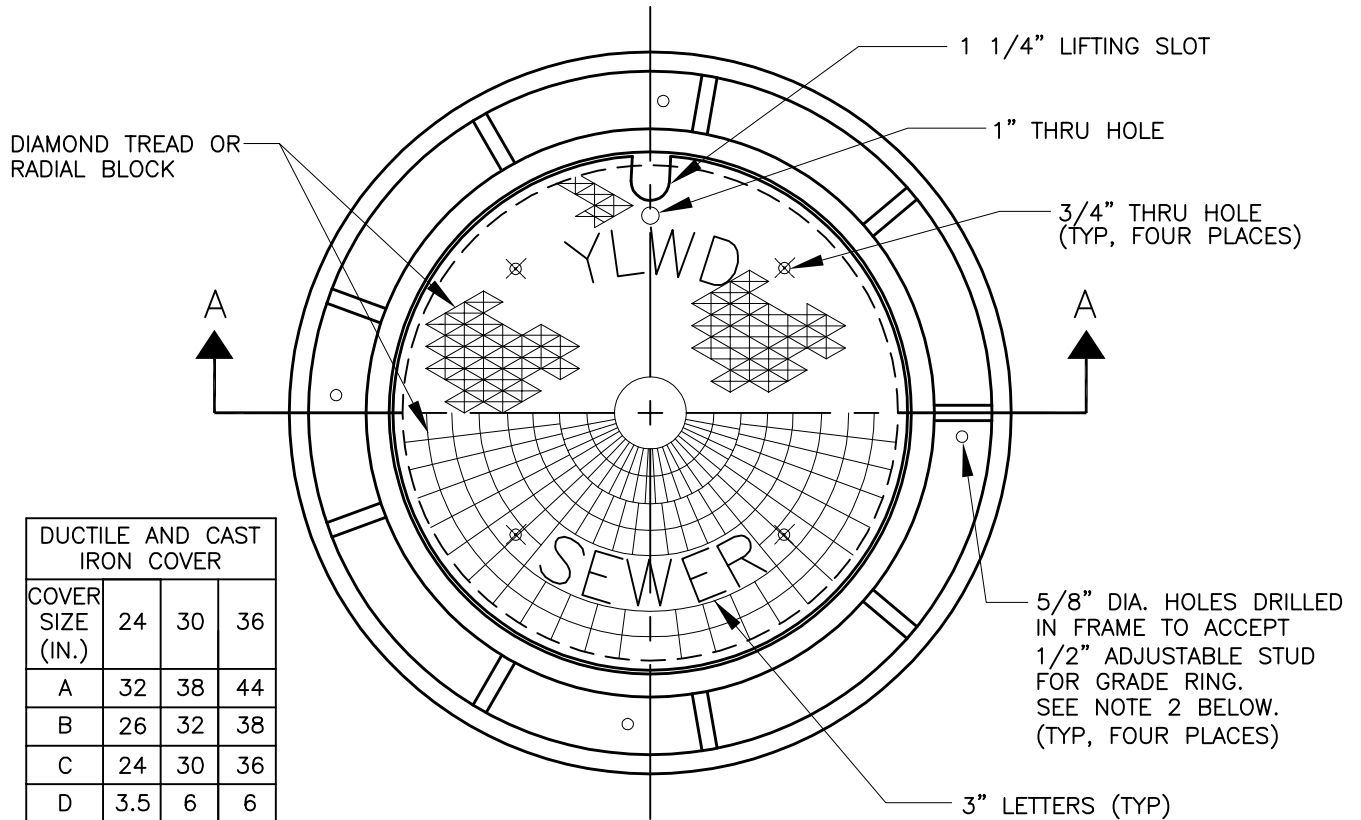
YORBA LINDA WATER DISTRICT

MANHOLE SHAFT LOCATION DETAILS

STD. DWG.

S-3

SHEET 1 OF 1

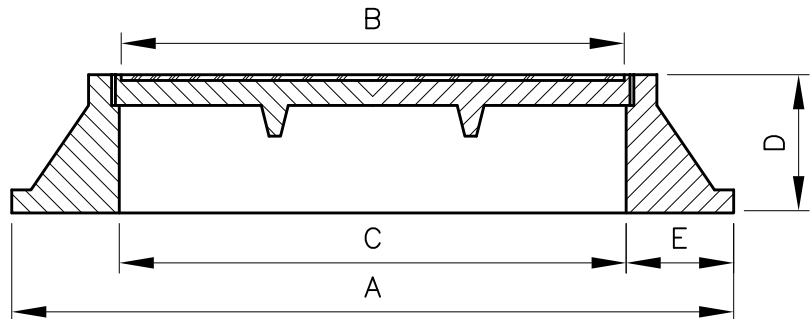


DUCTILE AND CAST IRON COVER

COVER SIZE (IN.)	24	30	36
A	32	38	44
B	26	32	38
C	24	30	36
D	3.5	6	6
E	4	4	4

FIBER REINFORCED POLYMER COVER

COVER SIZE (IN.)	24	30	36
A	37	43	46.5
B	26.06	32.07	38.06
C	24	30	36
D	4.25	5.05	5
E	6.5	6.5	5.25



SECTION A-A

**NOTES:**

- 48" MANHOLES SHALL HAVE 24" COVERS. 60" MANHOLES SHALL HAVE 30" COVERS. 72" MANHOLES SHALL HAVE 36" COVERS.
- WHERE FRAME AND COVER ARE SET 18" ABOVE GRADE, 4-1/2" DIA. INSERTS FOR ADJUSTABLE STUDS SHALL BE CAST IN TOP GRADE RING, ALIGNED AS DETAILED ABOVE. FRAME SHALL BE BOLTED TO GRADE RING.

APPROVED BY  
ENGINEERING  
MANAGER

DATE: 3/2019

SCALE: NTS



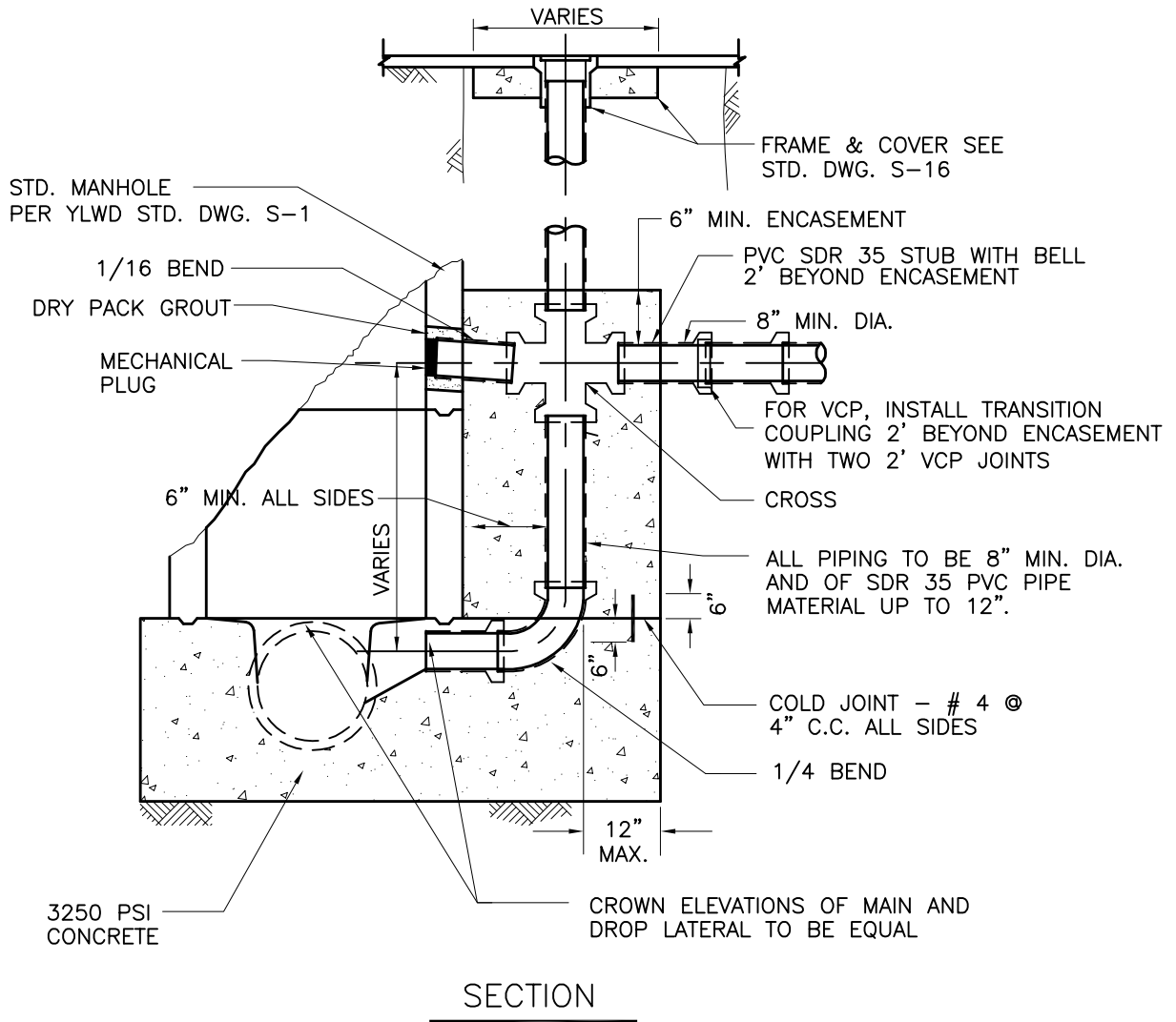
YORBA LINDA WATER DISTRICT

TRAFFIC MANHOLE FRAME & COVER

STD. DWG.


S-4

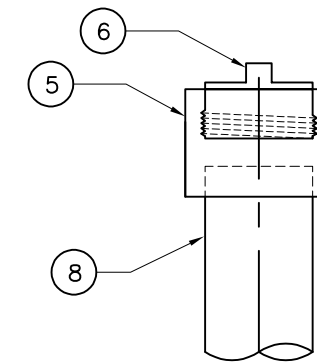
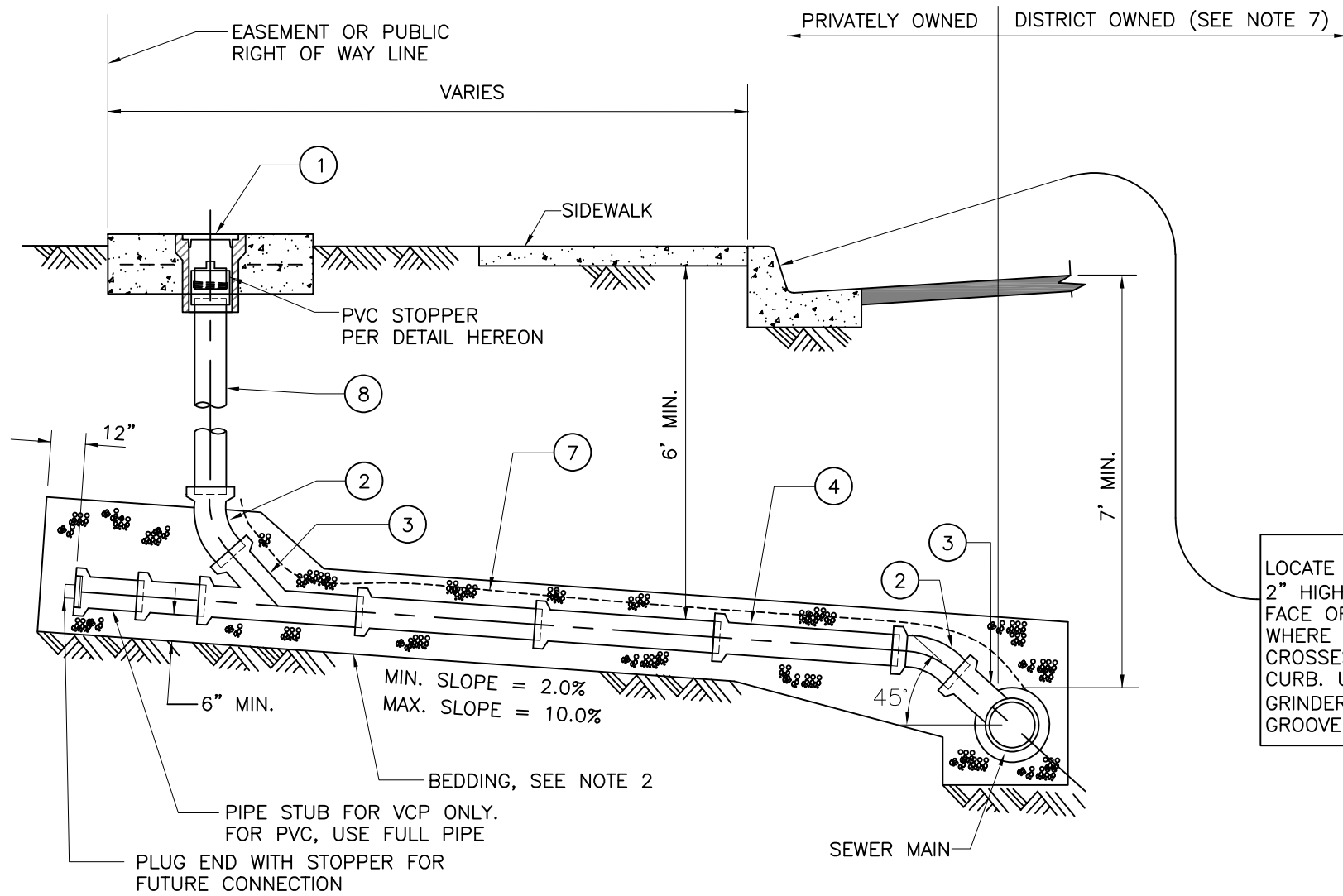
SHEET 1 OF 1



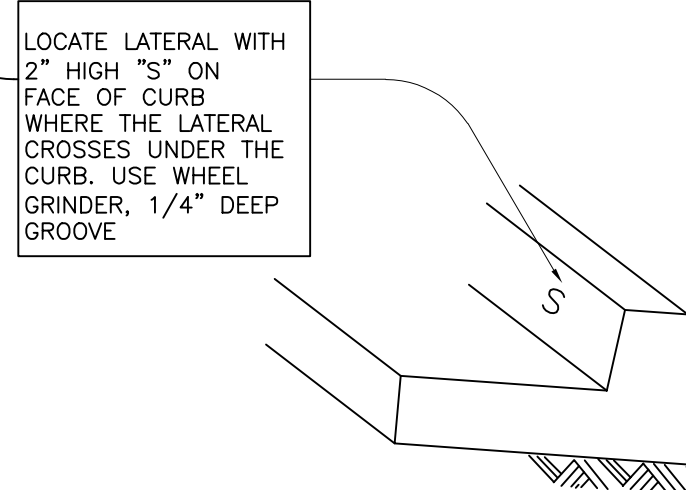
**NOTES:**

1. DROP MANHOLE ONLY TO BE USED FOR SPECIAL SITUATIONS, AND SHALL NOT BE CONSTRUCTED WITHOUT DISTRICT APPROVAL.
2. ALL NEW OPENING CONSTRUCTED INTO MANHOLE SHALL BE DONE BY CORE DRILLING.
3. WHERE REQUIRED, INTERIOR WALL OF MANHOLE TO BE LINED PER YLWD STD. SPEC. SECTION 03461.

APPROVED BY ENGINEERING MANAGER		YORBA LINDA WATER DISTRICT	STD. DWG.
DATE: 3/2019		DROP MANHOLE DETAIL	S-5
SCALE: NTS		SHEET 1 OF 1	



PVC STOPPER DETAIL



NOTES:

1. LATERAL SIZE TO BE DETERMINED ON THE BASIS OF TOTAL NUMBER OF DRAINAGE FIXTURE UNITS, BUT IN NO CASE SHALL THE LATERAL DIA. BE LESS THAN THE FOLLOWING:  
 4" FOR SINGLE FAMILY RESIDENTIAL BUILDINGS OR MULTIPLE FAMILY RESIDENTIAL UNITS  
 6" FOR PARKS, MULTIPLE FAMILY RESIDENTIAL, COMMERCIAL, INDUSTRIAL, APARTMENT OR HOTEL BUILDINGS
2. PLACE BEDDING PER YLWD STD. SPEC. SECTION 02223 AND YLWD STD. DWG. S-8.
3. PLUG WYE BRANCH WITH ABS STOPPER OR APPROVED "COOKIE" OR CAP.
4. CONNECTIONS TO THE CLEANOUT RISER PIPE ARE NOT PERMITTED.
5. LATERAL CLEANOUT RISER SHALL BE INSTALLED IMMEDIATELY ADJACENT TO AND WITHIN DEDICATED EASEMENT OR PUBLIC RIGHT OF WAY LINE. CLEANOUT SHALL NOT BE INSTALLED WITHIN SIDEWALKS, WALKWAYS, CONCRETE SURFACE AREAS, OR ANY PATH OF TRAVEL, EXCEPT WHERE APPROVED BY DISTRICT'S ENGINEERING MANAGER.
6. FOR SINGLE SEWER RESIDENTIAL CONNECTIONS, PVC SDR 35 LATERAL PIPE MATERIAL MAY BE USED ON VCP SEWER MAIN. THE TRANSITION COUPLING SHALL BE INSTALLED AFTER THE VCP WYE CONNECTION, 1/8 BEND AND PIPE STUB.
7. SEWER LATERAL IS PRIVATELY OWNED, INCLUDING SADDLE CONNECTION (SEE COLLAR WYE SADDLE IN STD. DWG. S-7). FACTORY FABRICATED WYE CONNECTION IS DISTRICT OWNED (SEE CUT IN WYE IN STD. DWG S-7).

ITEM

MATERIAL

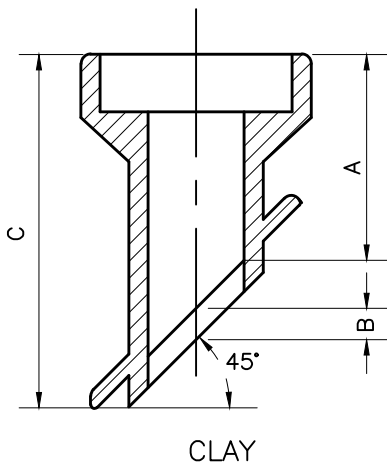
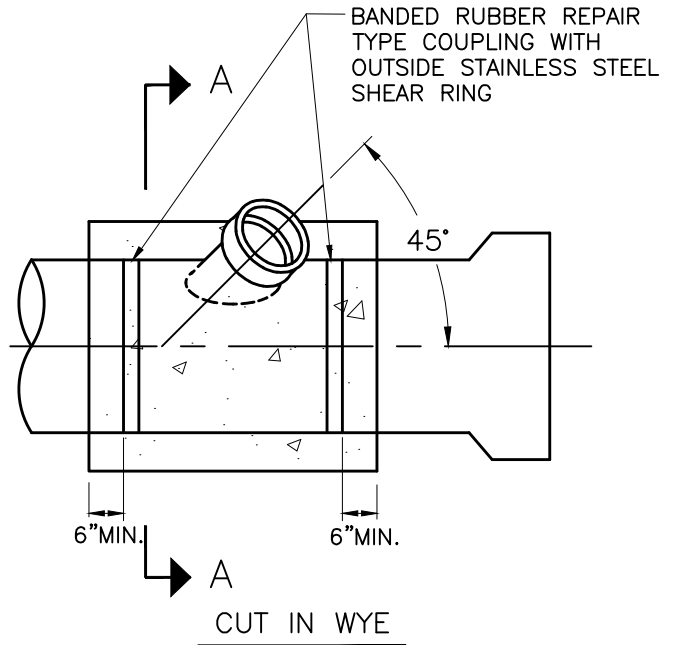
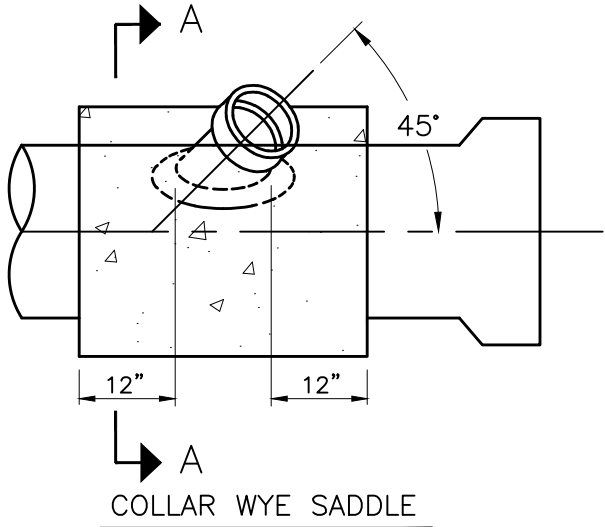
- ① — CLEANOUT FRAME AND COVER PER YLWD STD. DWG. S-16.
- ② — 1/8 BEND (OR OTHER FITTING NECESSARY TO ADJUST PROPER GRADE). MATERIAL SHALL MATCH MAIN MATERIAL.
- ③ — VCP OR PVC SDR 35 WYE BRANCH FITTING. MATERIAL SHALL MATCH MAIN MATERIAL. ALSO SEE STD. DWG. S-7.
- ④ — VCP OR PVC SDR 35 PIPE. LATERAL MATERIAL SHALL MATCH MAIN MATERIAL. ALSO SEE NOTE 6.
- ⑤ — SOLVENT WELD X F.I.P.T. SCH 40 PVC COUPLING.
- ⑥ — PVC SCH. 40 STOPPER M.I.P.T. PLUG WITH MALE SQUARE NUT.
- ⑦ — DETECTABLE WARNING TAPE PER YLWD STD. SPEC. SECTION 15151.
- ⑧ — PVC SDR 35 CLEANOUT RISER PIPE. USE TRANSITION COUPLING IF LATERAL MATERIAL IS DIFFERENT THAN CLEANOUT RISER PIPE.

APPROVED BY ENGINEERING MANAGER		YORBA LINDA WATER DISTRICT	STD. DWG. <b>S-6</b>
DATE:10/2024		SEWER LATERAL	SHEET 1 OF 1

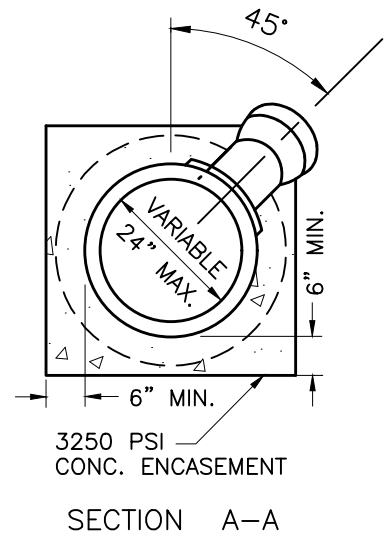
**NOTE:**

THE BELL ON THE COLLAR WYE SADDLE SHALL NOT BE ENCASED IN CONCRETE.

TAP TO BE MADE AT APPROX. CENTERLINE OF JOINT.



CLAY			
LATERAL DIAMETER INCHES	INCHES		
	A	B	C
4	2-1/2	1-1/2	6-1/2
6	3	1-1/2	9
8 & UP	CONNECTION BY STD MANHOLE		



**NOTES:**

1. THE HOLE FOR THE COLLAR WYE FITTING FOR A SEWER SADDLE SHALL BE MADE WITH A TAPPING MACHINE. THE HOLE SHALL BE CLEANLY MACHINED, AND IF NECESSARY, WORKED BY HAND WITH A RASP OR SANDED TO ACCOMPLISH A TRUE AND NEAT OPENING FOR THE COLLAR WYE.
2. THE COLLAR WYE SADDLE SHALL BE SECURED TO THE SEWER WITH AN APPROVED EPOXY RESIN.
3. THE SADDLE CONNECTION SHALL BE SECURED WITH 3250 PSI CONCRETE ENCASEMENT AFTER THE CONNECTION IS APPROVED BY THE DISTRICT REPRESENTATIVE.
4. DEBRIS SHALL BE KEPT OUT OF THE SEWER. THE SADDLED REACH OF SEWER MAIN SHALL BE CLEANED AND BALLED AS DIRECTED BY THE DISTRICT REPRESENTATIVE.
5. DAMAGED PIPE SHALL BE REPAIRED AS DIRECTED BY THE DISTRICT REPRESENTATIVE.
6. A CUT-IN WYE SHALL BE USED WHEN LATERAL CONNECTIONS IS SIZE-ON-SIZE WITH THE MAIN.

APPROVED BY  
ENGINEERING  
MANAGER

DATE: 7/2016

SCALE: NTS



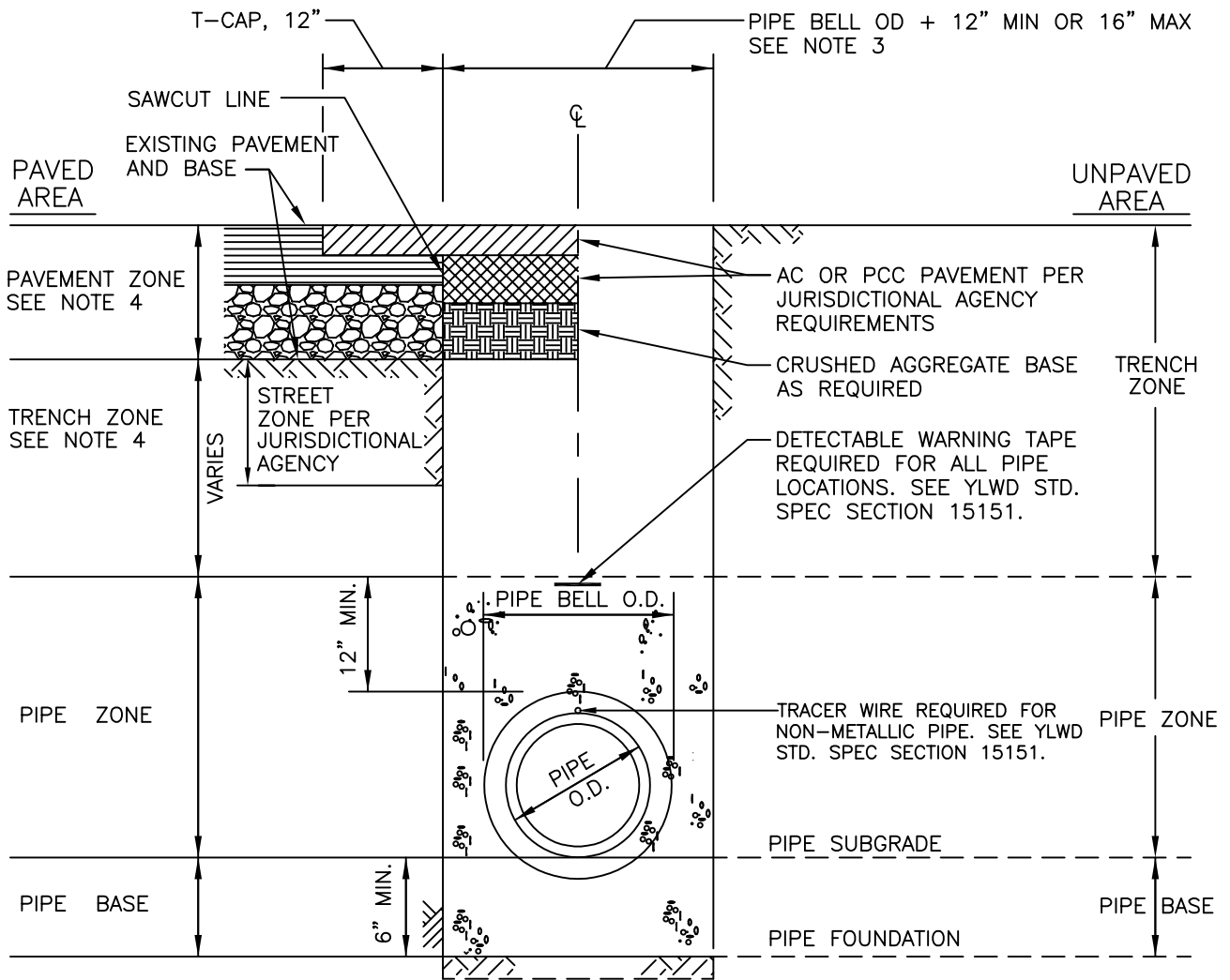
YORBA LINDA WATER DISTRICT

SEWER SADDLE & CUT IN WYE CONNECTION

STD. DWG.

S-7


SHEET 1 OF 1

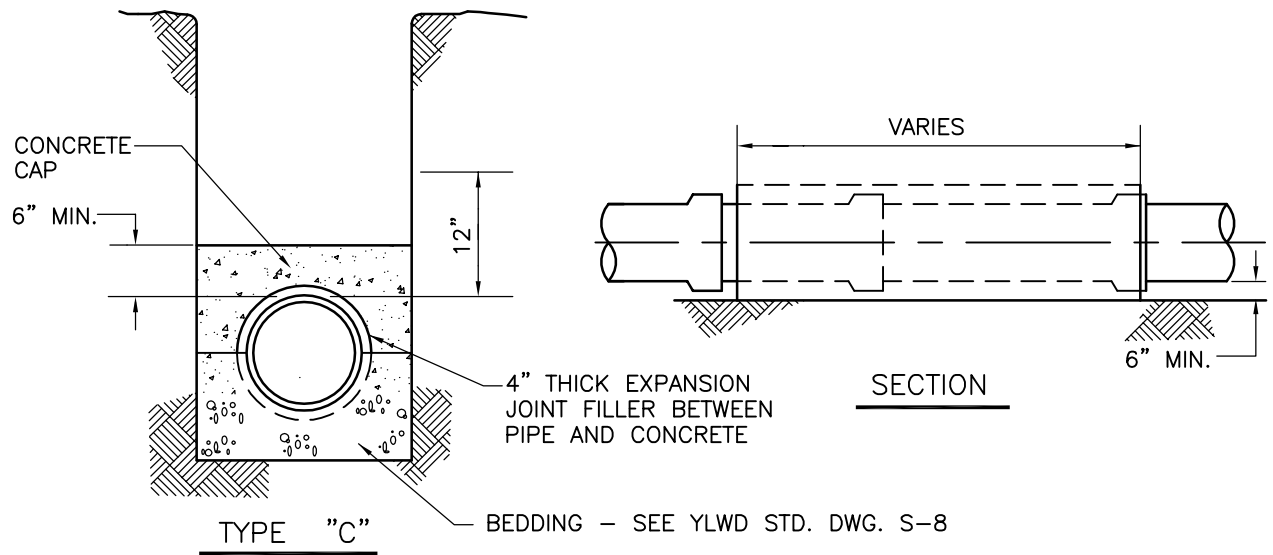
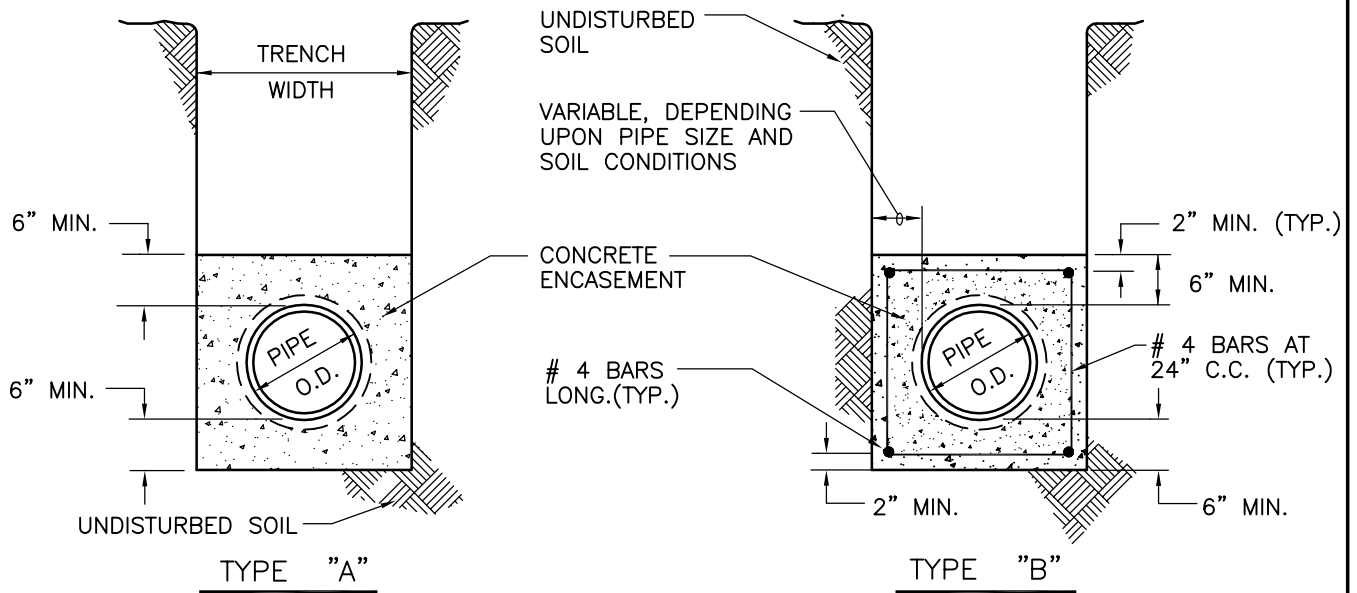


**NOTES:**

1. WORK SHALL BE IN ACCORDANCE WITH SPECIFICATION SECTION 02223, 02578, AND AS REQUIRED BY PERMIT CONDITIONS.
2. PIPE SHALL BE PLACED ON A FOUNDATION ACCEPTABLE TO GEOTECHNICAL ENGINEER. REMOVE AND RECOMPACT WITH PIPE BASE MATERIAL TO DEPTH ACCEPTABLE TO GEOTECHNICAL ENGINEER.
3. TRENCH WIDTH AT THE UPPER LIMIT OF THE PAVEMENT ZONE SHALL BE WITHIN THE FOLLOWING LIMIT:
  - (A) MAXIMUM TRENCH WIDTH—O.D. PIPE BELL PLUS 8" MAX. EACH SIDE OF PIPE.
  - (B) MINIMUM TRENCH WIDTH—O.D. PIPE OR BELL PLUS 6" MIN. EACH SIDE OF PIPE.
4. TRENCH ZONE AND PAVEMENT ZONE RESTORATION PER JURISDICTIONAL AGENCY REQUIREMENTS OR PER YLWD REQUIREMENTS FOR PRIVATE STREETS.
5. FOR SEWER VCP, PIPE BASE AND PIPE ZONE MATERIAL SHALL BE 3/4" MAX. CRUSHED ROCK. FOR SEWER PVC, PIPE BASE AND PIPE ZONE MATERIAL SHALL BE IMPORTED SAND, SE 30 OR 3/4" MAX. CRUSHED ROCK.


SEE NOTE 2

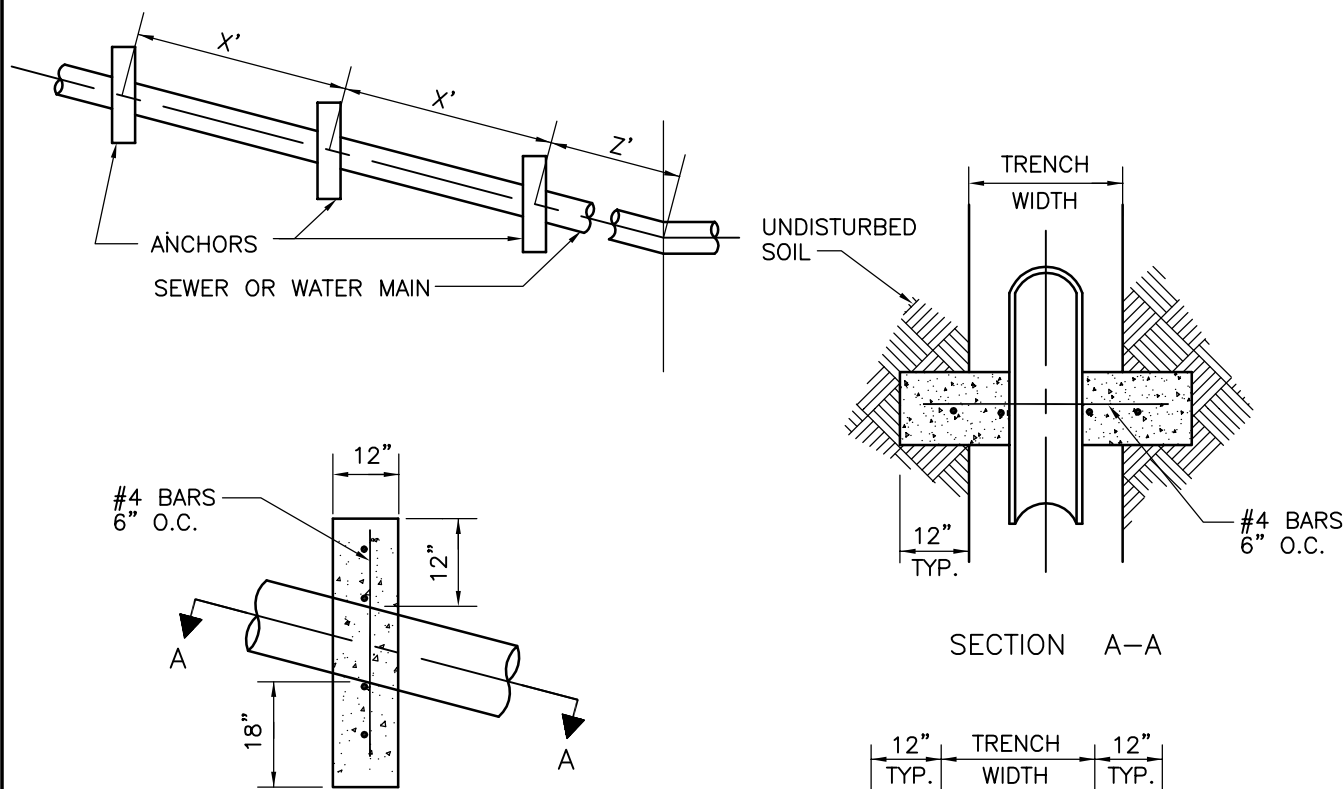
APPROVED BY ENGINEERING MANAGER		YORBA LINDA WATER DISTRICT	STD. DWG.
DATE: 4/2026		SEWER LINE TRENCH SECTION & BEDDING DETAILS	S-8
SCALE: NTS		SHEET 1 OF 1	



**NOTES:**

1. TYPE OF CONCRETE ENCASEMENT TO BE USED SHALL BE SHOWN ON PLANS OR AS SPECIFIED BY DISTRICT REPRESENTATIVE TO MEET UNFORESEEN FIELD CONDITIONS. UNLESS NOTED OTHERWISE, ENCASEMENT SHALL BE 2500 PSI CONCRETE.
2. ENCASEMENT TO BE PLACED AGAINST UNDISTURBED NATURAL GROUND OR FILL COMPACTED TO 90% RELATIVE DENSITY.
3. NO. 4 STEEL REINFORCING BARS SHALL BE USED AS SPECIFIED.
4. ENCASEMENT SHALL NOT BE INSTALLED ON VCP SEWER PIPES.

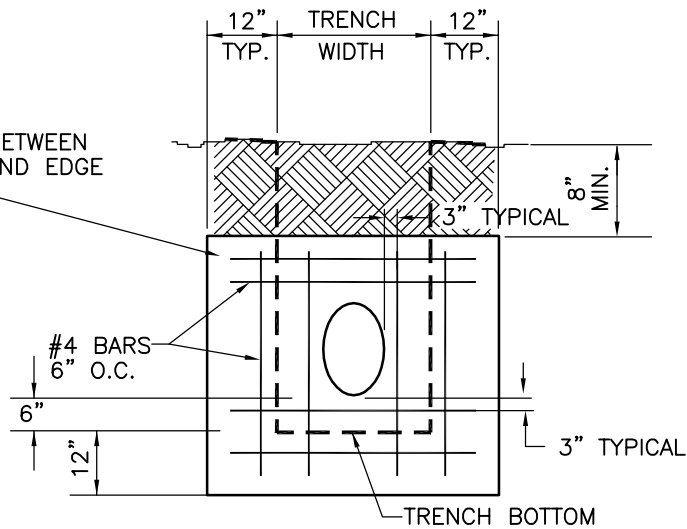
APPROVED BY ENGINEERING MANAGER		YORBA LINDA WATER DISTRICT	STD. DWG.
DATE 7/2016		CONCRETE ENCASEMENT TYPE A, B, & C	S-10
			SHEET 1 OF 1



SECTION A-A

PIPE SLOPE	PIPE SLOPE	X DISTANCE (MAX)	Z DISTANCE (MAX)
100%	1:1	12'	4'
66.6%	1-1/2:1	14'	8'
50%	2:1	16'	12'
40%	2-1/2:1	18'	18'
33.3%	3:1	20'	20'

3" MIN. CLEARANCE BETWEEN REINFORCING STEEL AND EDGE OF CONCRETE



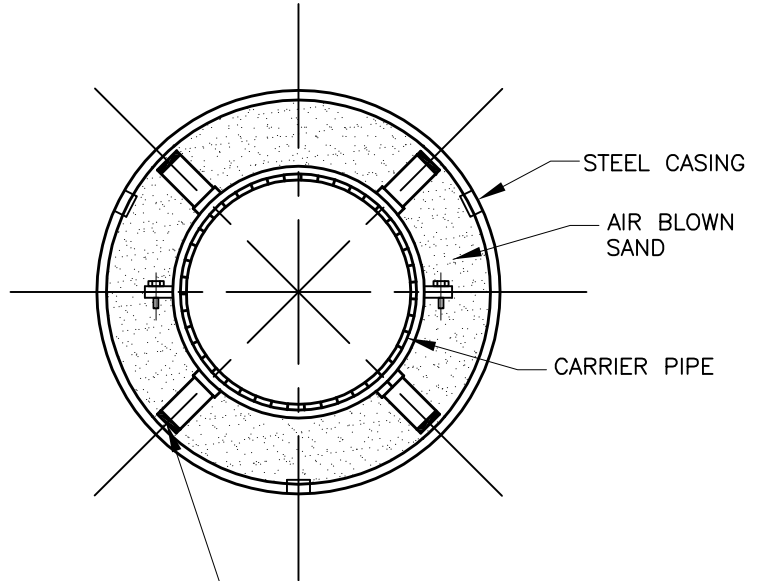
REINFORCING STEEL PATTERN

NOTES:

1. PIPE ANCHORS REQUIRED ON ALL SLOPES OF 3:1 OR STEEPER.
2. ANCHOR SHALL EXTEND 12" MINIMUM INTO UNDISTURBED SOIL.
3. CONCRETE SHALL BE 3250 PSI.
4. ANCHORS FOR TRAPEZOIDAL TRENCH SECTIONS SHALL CONFORM TO TRENCH CROSS SECTION AND EXTEND 12" INTO UNDISTURBED SOIL.
5. FOR VCP, ANCHORS SHALL NOT BE PLACED WITHIN 6" OF THE PIPE JOINT.

APPROVED BY ENGINEERING MANAGER		<b>YORBA LINDA WATER DISTRICT</b>	STD. DWG.
DATE  7/2016		<b>CONCRETE SLOPE ANCHORS</b>	<b>S-11</b>
			SHEET 1 OF 1

STEEL CASING SCHEDULE			
V.C.P. SIZE	BELL O.D.	MIN. CASING SIZE, I.D.	MIN. WALL THICK.
6"	10.8"	18"	5/16"
8"	13.1"	20"	3/8"
10"	16.3"	24"	3/8"
12"	18.8"	27"	3/8"
15"	22.8"	30"	1/2"
18"	26.5"	36"	1/2"
PVC SIZE	BELL O.D.	MIN. CASING SIZE, I.D.	MIN. WALL THICK.
6"	8.7"	16"	5/16"
8"	10.8"	18"	5/16"
10"	12.9"	20"	3/8"
12"	15.1"	24"	3/8"
15"	19.7"	27"	3/8"
18"	21.9"	30"	1/2"



STAINLESS STEEL CASING SPACERS WITH FIBERGLASS POLYMER COMPOSITE RUNNERS. SEE YLWD STD. SPEC. SECTION 02315 FOR ACCEPTABLE PRODUCTS.


**NOTES:**

1. JACKED CASING SHALL BE INSTALLED PER YLWD STD. SPEC. SECTION 02315.
2. SIZE AND THICKNESS OF CASING SHALL BE AS SHOWN IN SCHEDULE. FOR LONG BORES OR SPECIAL SITUATIONS, GREATER WALL THICKNESS THAN SHOWN IN THE SCHEDULE MAY BE REQUIRED.
3. ALL STEEL CASING PIPE FIELD JOINTS SHALL BE WELDED FULL-CIRCUMFERENCE PER YLWD STD. SPEC. SECTIONS 02315 AND 05120.
4. CARRIER PIPE SHALL BE AIR PRESSURE TESTED PRIOR TO FILLING CASING.
5. UPSTREAM AND DOWNSTREAM ELEVATIONS OF CARRIER PIPE TO BE VERIFIED PRIOR TO FILLING.
6. EACH END OF CASING SHALL BE SEALED WITH CONCRETE MORTAR, BRICK & MORTAR OR PVC PLUG.
7. BACKFILL FOR CASING IN OPEN CUT TRENCH SHALL BE IN ACCORDANCE WITH YLWD STD. DWG. S-8.
8. PROVIDE GROUT CONNECTIONS PER YLWD STD. SPEC. SECTION 02315.

APPROVED BY ENGINEERING MANAGER		YORBA LINDA WATER DISTRICT	STD. DWG.
		STEEL CASING FOR SEWER PIPE	S-12
DATE: 3/2019			
SCALE: NTS			SHEET 1 OF 1

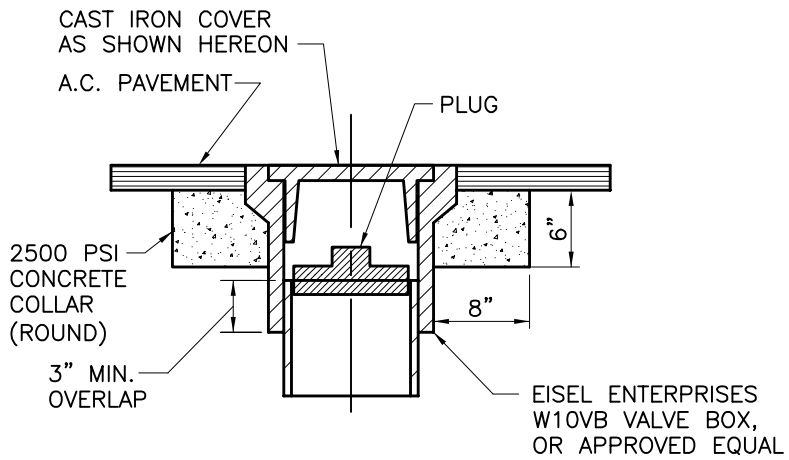
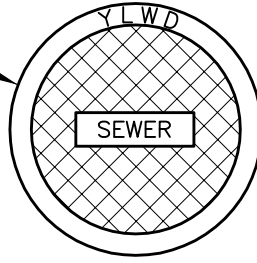
## STANDARD SEWER NOTES

1. THE SEWER SYSTEM AS SHOWN ON THESE PLANS SHALL BE CONSTRUCTED IN ACCORDANCE WITH YORBA LINDA WATER DISTRICT'S STANDARD SPECIFICATIONS AND DRAWINGS FOR CONSTRUCTION OF DOMESTIC WATER AND SEWER FACILITIES, LATEST EDITION. CONTRACTOR SHALL KEEP A COPY OF THE STANDARD SPECIFICATIONS AND DRAWINGS ON THE JOBSITE AT ALL TIMES.
2. THE DISTRICT SHALL BE NOTIFIED AT LEAST 48 HOURS PRIOR TO COMMENCING WORK AND FOR SCHEDULING INSPECTIONS ON THE SEWER IMPROVEMENTS. PHONE: (714) 701-3100, FOR INSPECTION. NO FACILITY SHALL BE BACKFILLED UNTIL INSPECTED BY THE DISTRICT.
3. A PRECONSTRUCTION MEETING CONFERENCE OF REPRESENTATIVES FROM AFFECTED AGENCIES AND THE CONTRACTOR SHALL BE HELD ON THE JOB SITE AT LEAST 48 HOURS PRIOR TO START OF WORK.
4. THE CONTRACTOR SHALL NOTIFY UNDERGROUND SERVICE ALERT (DIG ALERT) AT LEAST TWO (2) WORKING DAYS PRIOR TO CONSTRUCTION AT 811 OR 1-800-422-4133.
5. TO REPORT A WATER OR SEWER MAIN BREAK, LEAK, OR OTHER DAMAGE TO DISTRICT FACILITIES, CALL (714) 701-3000.
6. APPROVAL OF THIS PLAN BY YORBA LINDA WATER DISTRICT DOES NOT CONSTITUTE A REPRESENTATION AS TO THE ACCURACY OR COMPLETENESS OF THE LOCATION OR EXISTENCE OR NON-EXISTENCE OF ANY UNDERGROUND UTILITY PIPE OR STRUCTURE WITHIN THE LIMITS OF THIS PROJECT. THE CONTRACTOR SHALL VERIFY THE HORIZONTAL AND VERTICAL LOCATION OF ALL UTILITY CROSSINGS BEFORE CONSTRUCTING ANY SEWERS IN THIS PROJECT. THE CONTRACTOR IS REQUIRED TO TAKE ALL DUE PRECAUTIONARY MEANS TO PROTECT THE UTILITY LINES NOT OF RECORD OR NOT SHOWN IN THIS PLAN. CONTRACTOR PERFORMING WORK ON THIS PROJECT SHALL BECOME FAMILIAR WITH THIS SITE AND SHALL BE SOLELY RESPONSIBLE FOR ANY DAMAGE TO EXISTING FACILITIES RESULTING DIRECTLY FROM CONSTRUCTION OPERATIONS.
7. IN ACCORDANCE WITH CALIFORNIA CODE OF REGULATIONS, TITLE 8, SECTION 341 (PERMIT REQUIREMENTS) THE CONTRACTOR SHALL OBTAIN A PERMIT FROM THE STATE OF CALIFORNIA DIVISION OF INDUSTRIAL SAFETY PRIOR TO ANY TRENCH EXCAVATION. A COPY OF SAID PERMIT SHALL BE KEPT AT THE JOB SITE AND AVAILABLE TO THE DISTRICT REPRESENTATIVE UPON REQUEST.
8. CONTRACTOR SHALL REPLACE IN KIND ALL IMPROVEMENTS REMOVED OR DISTURBED DURING CONSTRUCTION UNLESS OTHERWISE NOTED.
9. THE DEVELOPER'S ENGINEER SHALL FURNISH THE CONTRACTOR AND THE DISTRICT INSPECTOR SEWER CUT SHEETS WHICH SHALL INCLUDE "WYE" STATIONING.
10. 0+00 SHOWN ON SEWER PROFILE DENOTES STATIONING ALONG CENTERLINE SEWER FROM DOWNSTREAM MANHOLE.
11. THE DEVELOPER'S ENGINEER SHALL SET A TOP OF CURB STAKE AT ALL SEWER LATERAL LOCATIONS.
12. WHERE SEWER MANHOLES ARE NOT CONSTRUCTED WITHIN THE STREET RIGHT-OF-WAY, A UTILITY MARKER PER STANDARD SPECIFICATION 15151 SHALL BE SET AS A MANHOLE REFERENCE.
13. ALL GRAVITY SEWER MAIN LINES 8 INCH DIAMETER AND GREATER AND ALL SEWER SERVICE LATERALS SHALL BE PVC, UNLESS OTHERWISE NOTED. FOR INDUSTRIAL, COMMERCIAL AND MEDICAL APPLICATIONS, EXTRA STRENGTH VITRIFIED CLAY PIPE SHALL BE USED IF THE DISCHARGE CHARACTERISTICS ARE INCOMPATIBLE WITH PVC AS DETERMINED BY THE ENGINEERING MANAGER. GRAVITY SEWER MAIN LINES WITHIN EASEMENTS SHALL BE UNPLASTICIZED SDR 35 PVC PLASTIC PIPE. ALL VCP PIPE SHALL BE BELL AND SPIGOT COMPRESSION JOINTS PER STANDARD SPECIFICATION 02710.
14. THE USE OF PORTLAND CEMENT IN ANY FORM WILL NOT BE PERMITTED FOR JOINTS.
15. IF THE BOTTOM OF THE EXISTING WATER MAIN DOES NOT CLEAR THE TOP OF THE NEW SANITARY SEWER MAIN BY 1 FOOT, ALTERNATIVE CONSTRUCTION APPROVED BY THE STATE WATER RESOURCES CONTROL BOARD IS REQUIRED.
16. SEWER CONNECTION: SERVICE CONNECTIONS ARE TO BE CONSTRUCTED FROM THE SEWER MAIN TO THE PROPERTY LINE FOR EACH LOT. SEE STANDARD DRAWING S-6.
17. CURBS SHALL BE INSCRIBED WITH AN "S" INDICATING LOCATION OF ALL SEWER LATERALS.
18. ANY WORK TO BE PERFORMED INSIDE A MANHOLE SHALL BE DONE IN ACCORDANCE WITH CAL/OSHA "CONFINED SPACES".
19. ALL SEWER MANHOLE LIDS ARE TO HAVE THE WORD "SEWER" AND THE INITIALS "YLWD" CAST THEREON AS SHOWN IN STANDARD DRAWING S-4.
20. MANHOLE COVERS SHALL BE LEFT AT LEAST 6" BELOW SUBGRADE AND BROUGHT TO FINAL GRADE UPON COMPLETION OF PAVING. FINAL MANHOLE SEATING SHALL BE 1/8" BELOW ASPHALT SURFACE.
21. WHERE SEWER MANHOLES ARE LOCATED, CURBS SHALL BE INSCRIBED WITH "MH" AND THE DISTANCE TO THE MANHOLE IN TWO (2) LOCATIONS.
22. FINAL TESTING FOR SEWER PIPELINES LEAKAGE SHALL BE MADE IN THE PRESENCE OF THE DISTRICT INSPECTOR AFTER ALL DRY UTILITIES ARE CONSTRUCTED AND BACKFILL HAS BEEN APPROVED AND ACCEPTED BY THE DISTRICT AND/OR JURISDICTIONAL AGENCY.
23. ALL TRENCH BACKFILL SHALL BE COMPACTED IN ACCORDANCE WITH STANDARD SPECIFICATION SECTION 02223, TRENCHING, BACKFILLING AND COMPACTING, AS DETERMINED BY A TEST METHOD REQUIRED BY THE DISTRICT OR JURISDICTIONAL AGENCY.
24. SEWER LATERAL CONNECTIONS SHALL NOT BE MADE UNTIL THE SEWER HAS BEEN TESTED FOR LEAKAGE AND ACCEPTED BY THE DISTRICT.
25. IN ORDER TO PREVENT ACCIDENTAL USE OF THE NEW SEWER PRIOR TO COMPLETION AND ACCEPTANCE, THE OUTLET OR INLET TO EXISTING TIE-IN MANHOLE(S) SHALL BE SEALED WITH A REMOVABLE PLUG. INSTALLATION OF THESE PLUGS SHALL BE APPROVED BY THE DISTRICT. PLUGS SHALL BE REMOVED AT THE TIME OF FINAL ACCEPTANCE.
26. AFTER FINAL TESTING AND MANHOLE COVERS HAVE BEEN BROUGHT TO FINISHED ASPHALT SURFACE, ALL SEWER LINES SHALL BE BALLED IN THE PRESENCE OF THE DISTRICT INSPECTOR. BALLING MUST BE COMPLETED TO THE SATISFACTION OF THE DISTRICT INSPECTOR PRIOR TO OCCUPANCY RELEASES BEING ISSUED.
27. ALL NEW SEWERS SHALL BE INSPECTED BY CONTRACTOR USING CLOSED-CIRCUIT TELEVISION (CCTV) EQUIPMENT IN ACCORDANCE WITH STANDARD SPECIFICATION 02701, INSTALLATION OF GRAVITY SEWER PIPELINES.
28. AT THE COMPLETION OF THE SEWER WORK AND PRIOR TO STREET PAVING, THE DEVELOPER'S ENGINEER SHALL FURNISH A SET OF "AS-BUILT" PLANS SHOWING THE LOCATIONS OF WYES AND END OF SEWER LATERALS AT PROPERTY LINE TO THE DISTRICT.
29. ALL SEWER SERVICE CONNECTIONS IN WHICH THE PAD ELEVATION OF THE PROPERTY BEING SERVED IS LOWER THAN THE RIM ELEVATION OF THE UPSTREAM MANHOLE SHALL HAVE A SEWER BACKFLOW PREVENTION VALVE. INSTALLATION OF THE BACKFLOW DEVICE SHALL COMPLY WITH ALL REQUIREMENTS OF THE JURISDICTIONAL AGENCY.
30. THE CONTRACTOR SHALL NOTIFY THE DISTRICT ONE (1) WEEK PRIOR TO ANY PROPOSED SHUT DOWN OF EXISTING MAINS OR LATERALS. CONTRACTOR SHALL COMPLETE ALL WORK WITHIN AN EIGHT (8) HOUR PERIOD FOR THE SCHEDULED SHUT DOWN.
31. ABANDONMENT OF SEWER FACILITIES SHALL BE IN ACCORDANCE WITH YLWD STANDARD SPECIFICATION 01045, EXISTING FACILITIES.

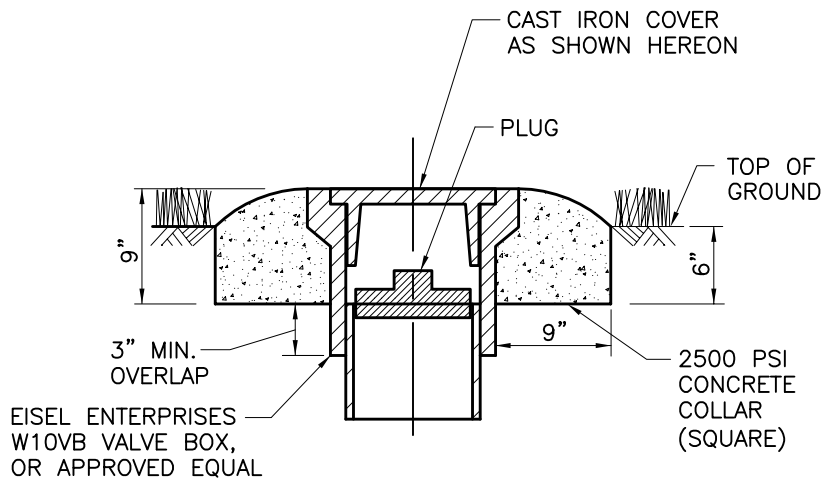
APPROVED BY ENGINEERING MANAGER		YORBA LINDA WATER DISTRICT	STD. DWG.
DATE: 4/2026		YLWD STANDARD SEWER NOTES	S-13
			SHEET 1 OF 1



EISEL ENTERPRISES W106C  
CAST IRON COVER WITH 6"  
SKIRT, OR APPROVED EQUAL



PAVED AREA



GRASS/UNPAVED AREA

APPROVED BY  
ENGINEERING  
MANAGER

DATE: 3/2019

SCALE: NTS



YORBA LINDA WATER DISTRICT

CLEANOUT FRAME AND COVER DETAIL

STD. DWG.

S-16

SHEET 1 OF 1